

Part of the
Kelsey Eco Range



FT+ HIRE GROUP
QUALITY EQUIPMENT - ALWAYS IN STOCK



Electric Mini Excavator

Battery Operated

- Full typical daily duty cycle
- Quiet - For easy communication between co-workers; For noise sensitive areas; For night work in urban areas.
- Zero emissions at point of use
- Fully electric - no trailing tethers
- No comparison on performance

JCB19C-1E ELECTRIC MINI EXCAVATOR

JCB19C-1E ELECTRIC MINI EXCAVATOR - SPECIFICATIONS

POWER SOURCE ⚡

Battery Type	Manganese Laminated Lithium-ion
Gross Capacity	19.8kWh (4 pack)
System Voltage	48V
Indicative Run Time	5 Hours (4 pack) , based on typical duty cycle
Zero Emissions at Point of Use	

WEIGHTS

Operating Weight (kg)	1862-1902kg
Shipping Weight (kg)	1787kg
Ground Bearing Pressure (Rubber Tracks) (kg/cm ²)	0.36

WORKING RANGE ↗

A	Max. Digging Reach (mm)	4043mm
B	Max. Digging Reach on Ground (mm)	3981mm
C	Max. Digging Depth - Dozer Up (mm)	2421mm
	Max. Digging Depth - Dozer Down (mm)	2576mm
D	Max. Digging Height (mm)	3667mm
E	Max. Dump / Load-Over Height (mm)	2637mm
F	Max. Height to Dipper Nose Pivot Pin (mm)	3154mm
G	Max. Vertical Wallcut Depth (mm)	2139mm
H	Min. Front Swing Radius (No Offset) (mm)	1517mm
	Min. Front Swing Radius (Fully Offset) (mm)	1196mm
I	Boom Swing Left (degrees)	75°
J	Boom Swing Right (degrees)	55°

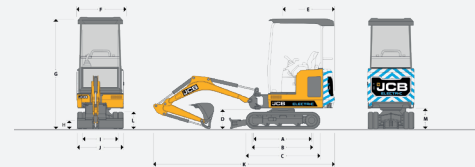
CHARGING ⚙️

On-board charger allowing direct connection to AC mains power supply	
Indicative Charge Time 0-100%, subject to environmental conditions	On-Board @ 110V - 12hrs On-Board @ 230V - 8hrs
Off-Board Fast Charge @ 415V	2-2.5hrs
Charging Cable Plug Type	16A 110V (Yellow)
	16A 230V (Blue)
	add 16A 415V (Red)

STATIC DIMENSIONS ↔

A	Sprocket Idler Centres (mm)	1218mm
B	Track Length on Ground (mm)	1220mm
C	Undercarriage Overall Length - Rubber (mm)	1578mm
D	Kingspost Clearance (mm)	409mm
E	Tailswing Radius (mm)	1103mm
F	Overall Width of Superstructure (mm)	996mm
G	Height over Canopy (mm)	2345mm
H	Ground Clearance (mm)	162mm
I	Track Gauge - Retracted / Extended (mm)	750-1110mm
J	Width over Tracks - Retracted (mm)	980mm
	Width over Tracks - Extended (mm)	1330mm
K	Transport Length (mm)	3860-3815mm
L	Track Height (mm)	367mm
M	Counterweight Clearance (mm)	434mm

STATIC DIMENSIONS



WORKING RANGE

